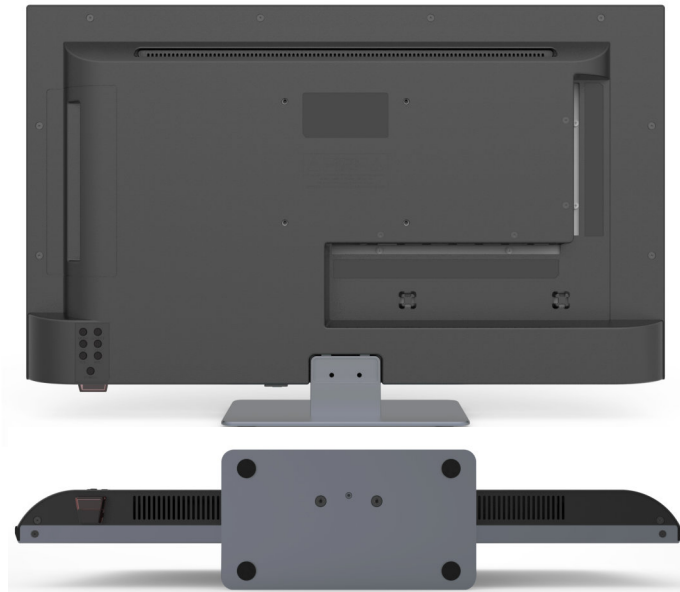


# 12V Smart TV

24S-LCD



Without Stand 542 x 318 x 45mm  
 With Stand 542 x 349 x 110mm

## 24' LCD 12V Smart TV

Introducing our new 24" RVTECH smart TV designed for the New Zealand RV market  
 Featuring the fully licensed LG webOS operating system.

Now you can watch all your favorite freeview channels and have full use of your favorite streaming apps including Apple TV and supporting AirPlay.

With its built in Wifi and Network port you can connect to the Internet for your latest movies and shows. Supporting Bluetooth you can pair the TV with wireless headphones or speakers for premium sound. Supplied with a 2 year warranty and local support. TV has never looked better.

### Key features:

- Slim Body 45mm
- Power supply 12V/3A - <0.5W Standby
- Weight without stand 2.7Kg
- 1920 x 1080 Resolution
- Brightness: 200cd/m<sup>2</sup>
- Contrast 3000/1
- Visible screen area 47.664 x 26.811 cm
- Viewing angle:H/V:178 °/178°,
- Tuners DVBS/S2 (Satellite) & DVBT/T2 (Terrestrial)
- 2 x USB A sockets
- 3 x HDMI Inputs - (HDMI 2 with ARC)
- 1 x Optical Audio Out (for sound bar)
- 1 x Earphone Jack
- Net Weight 2.89kg
- Vesa mounting standard 100x100
- Bluetooth 5.0
- On screen user guide
- Internet based software updates.



Fully licensed webOS , HDMI & Dolby

OneTouch NETFLIX & PRIME Video buttons on remote

Download free APPS for:

You Tube - TVNZ+ Three Now - Disney -Sky Sport Now - Neon - Apple TV and many more



Available from:



- Supplied with TV Stand
- Remote Control with batteries
- AC/DC Power Adapter
- 12VDC Cig Power Lead
- Quick start guide



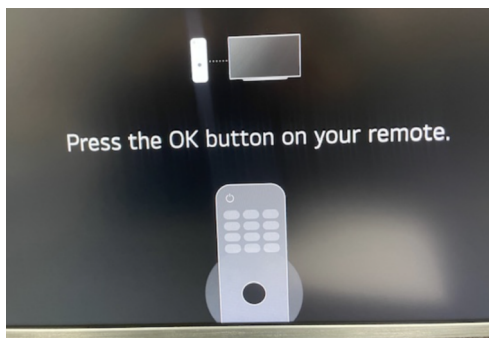
# 12V Smart TV

24S-LCD

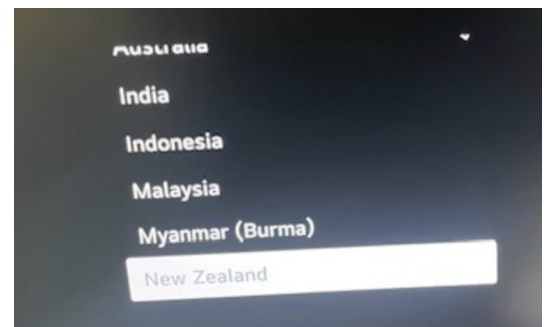
## Quick Start Guide for Satellite (Freeview) Set Up



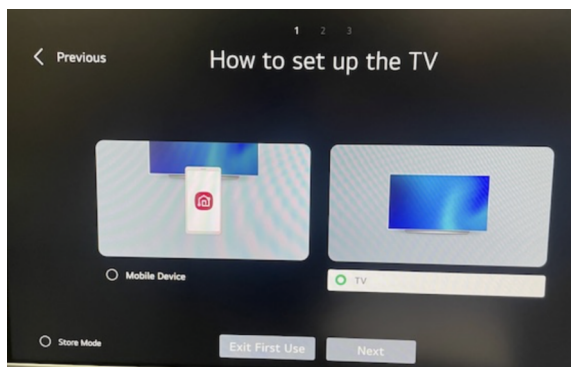
Make sure your Satellite dish is connected to the F Type Screw connection before powering on the TV.



When the TV software is ready to start.  
- please pair the remote.



Choose New Zealand.



There are 2 ways to setup the TV.  
Choosing Mobile device is easier if you have set your LG account and have wifi  
**Otherwise just choose TV:- and manual enter the information required.**

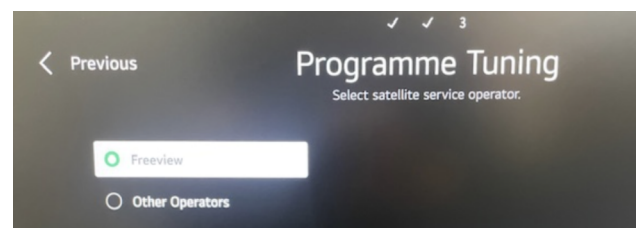


Use the QR code to start this process with the APP

## Satellite Tuning Section.



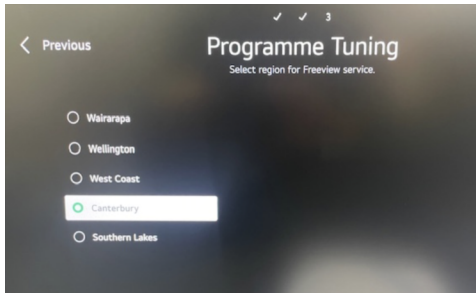
Make sure you choose Satellite , and un check the Antenna



Choose Freeview.

# 12V Smart TV

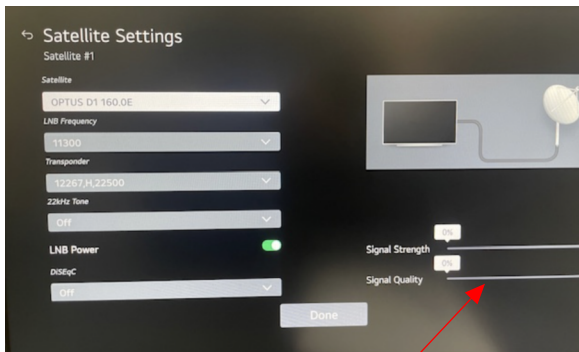
24S-LCD



Choose Your region,  
- This is only for local adverts

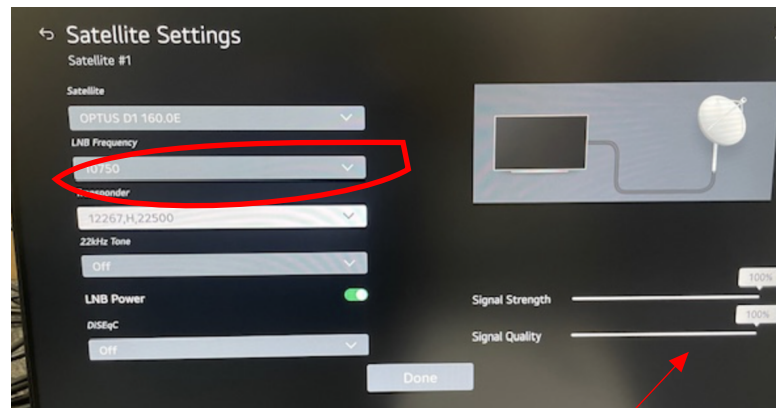
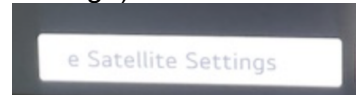


On this screen you will need to change if your LNB (on the dish) is not a 11300 version.  
tip - Most LNBs are 10750 nowadays. -( It will be written on the LNB as 10.75 / 10750 etc if you need to change)

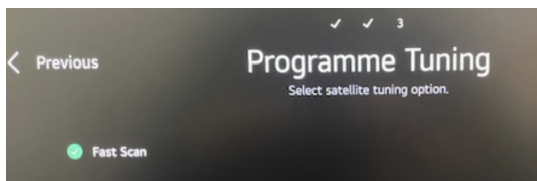


When you have the correct settings you should get signal  
So you check 11300 or 10750 for signal

Click Satellite Settings to change



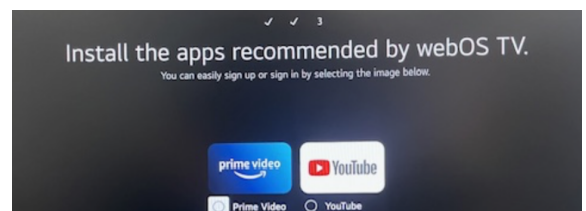
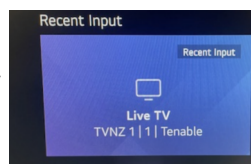
NB- Signal with 10750 LNB Frequency



From here go back, and now you can scan the channels under fast Scan  
-it may take a few minutes to complete the scan

Once scanned you should have >23 Channels loaded.

You can watch your channels under LIVE TV



Once you have connected to the wifi and loaded up your LG account, you can download the APPS and watch streaming TV

